

Installation Instructions for G3P, F3P, K3P, L3P, Molded Case Circuit Breakers



WARNING

DO NOT ATTEMPT TO INSTALL OR PERFORM MAINTENANCE ON EQUIPMENT WHILE IT IS ENERGIZED. SEVERE PERSONAL INJURY, DEATH, OR SUBSTANTIAL PROPERTY DAMAGE CAN RESULT FROM CONTACT WITH ENERGIZED EQUIPMENT. ALWAYS VERIFY THAT NO VOLTAGE IS PRESENT BEFORE PROCEEDING WITH THE TASK, AND ALWAYS FOLLOW GENERALLY ACCEPTED SAFETY PROCEDURES.

AUTOMATION DIRECT IS NOT LIABLE FOR THE MISAPPLICATION OR MISINSTALLATION OF ITS PRODUCTS.

The recommendations and information contained herein are based on Automation Direct experience and judgment, But should not be considered to be all-inclusive or covering every application or circumstance which may arise. If Any questions arise, contact Automation Direct for further information or instructions.

Ratings - UL 489

Frame Designation		G3P	F3P	K3P	L3P
Current Range	(Amps)	15-100	60-225	250-400	400-600
Interrupting Capacity (kA)	240V	65	65	65	65
	480V	22	35	35	35
	250V	-	10	10	20
	125/250V DC	10	-	-	-
Trip Unit Type		T/M	T/M	T/M	T/M
Thermal Trip		Fixed	Fixed	Fixed	Fixed
Magnetic Trip		Fixed	Fixed	Adj.	Adj.
Magnetic Range		-	-	5-10X	5-10X

Table 1 - Torque Values

Breaker Type	AWG Wire Range	Metric Wire Range (mm)	Wire Type	Torque Lb-In.	Torque N-m
G3P	#14-#10	2.5-4	Cu/Al	20	2.3
G3P	#8	10	Cu/Al	40	4.6
G3P	#6-1/0	16-50	Cu/Al	45	5.1
F3P	#14-#10	2.5-4	Cu/Al	35	4.0
F3P	#8	10	Cu/Al	40	4.6
F3P	#6-#4	10-25	Cu/Al	45	5.1
F3P	#3-4/0	25-95	Cu/Al	50	5.7
F3P*	#4-4/0	25-95	Cu/Al	120	13.9
K3P	3/0-250	95-120	Cu/Al	275	31.1
K3P	250-500	120-240	Cu/Al	375	42.0
L3P	250-350	120-185	Cu/Al	275	31.1
L3P	400-500	185-240	Cu/Al	275	31.1

* Mechanical Lug with Hex Head

INSTALLATION

The installation procedure consists of inspecting the circuit breaker; mounting the circuit breaker, connecting the line and load conductor; tightening terminals to the specified torque; and attaching terminals shields, as required.

Torque values for line/load terminals are given in Table 1.

Note: G3P and F3P circuit breakers are factory sealed. Internal accessories must be installed at the factory.

For additional information and/or technical assistance, please call Automation Direct at (800) 633-0405 or visit our website at AutomationDirect.com.

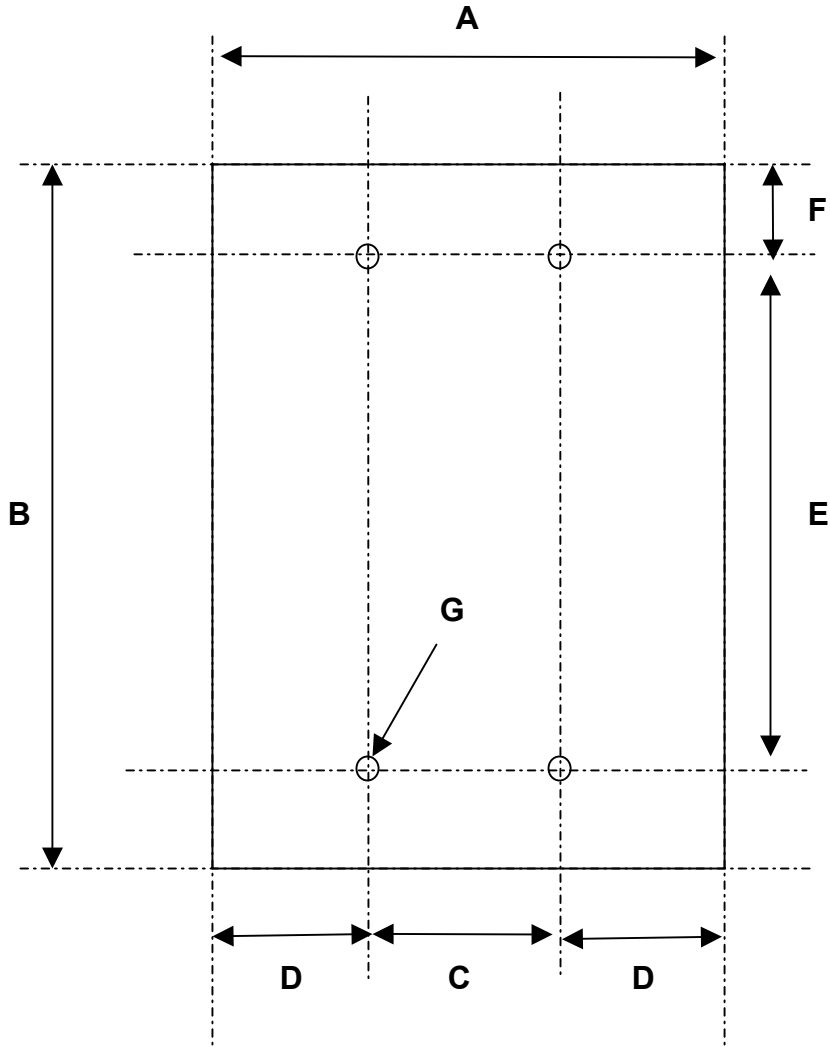


Table 2 - Mounting Locations

Breaker Type	A	B	C	D	E	F	G
G3P	3.000(76.170)	4.975(123.830)	1.000(25.400)	1.000(25.400)	3.218(81.740)	0.969(24.610)	6-32 Tap
F3P	4.125(104.780)	6.000(152.40)	1.375(34.930)	1.375(34.930)	4.500(114.300)	0.750(19.050)	0.164-32 Tap
K3P	5.490(139.430)	10.125(257.180)	1.719(43.660)	1.886(47.885)	8.438(214.320)	0.844(21.440)	0.250-20 Tap
L3P	8.250(209.550)	10.750(273.050)	2.750(69.850)	4.000(101.560)	9.531(242.090)	0.585(14.850)	0.250-20 Tap